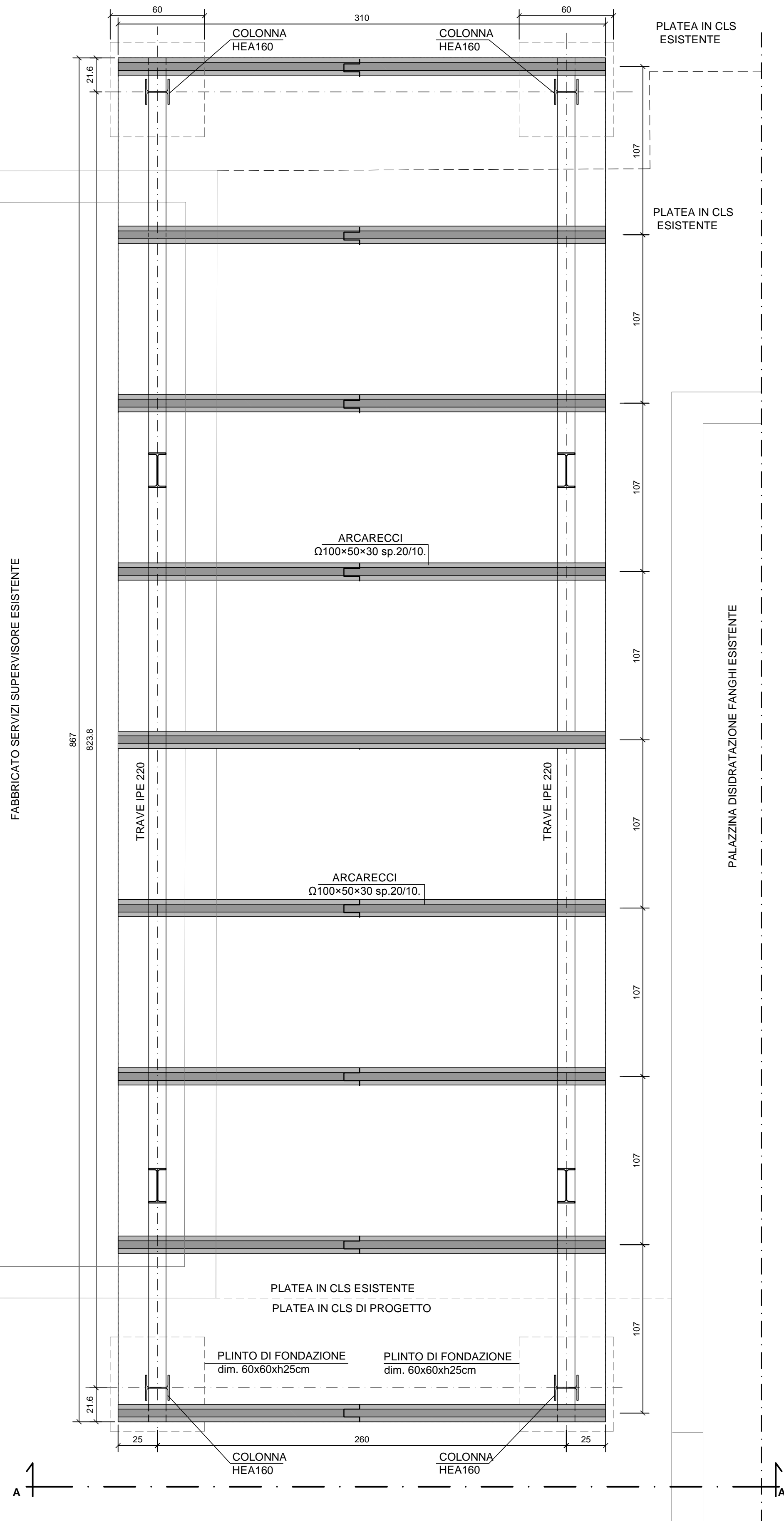
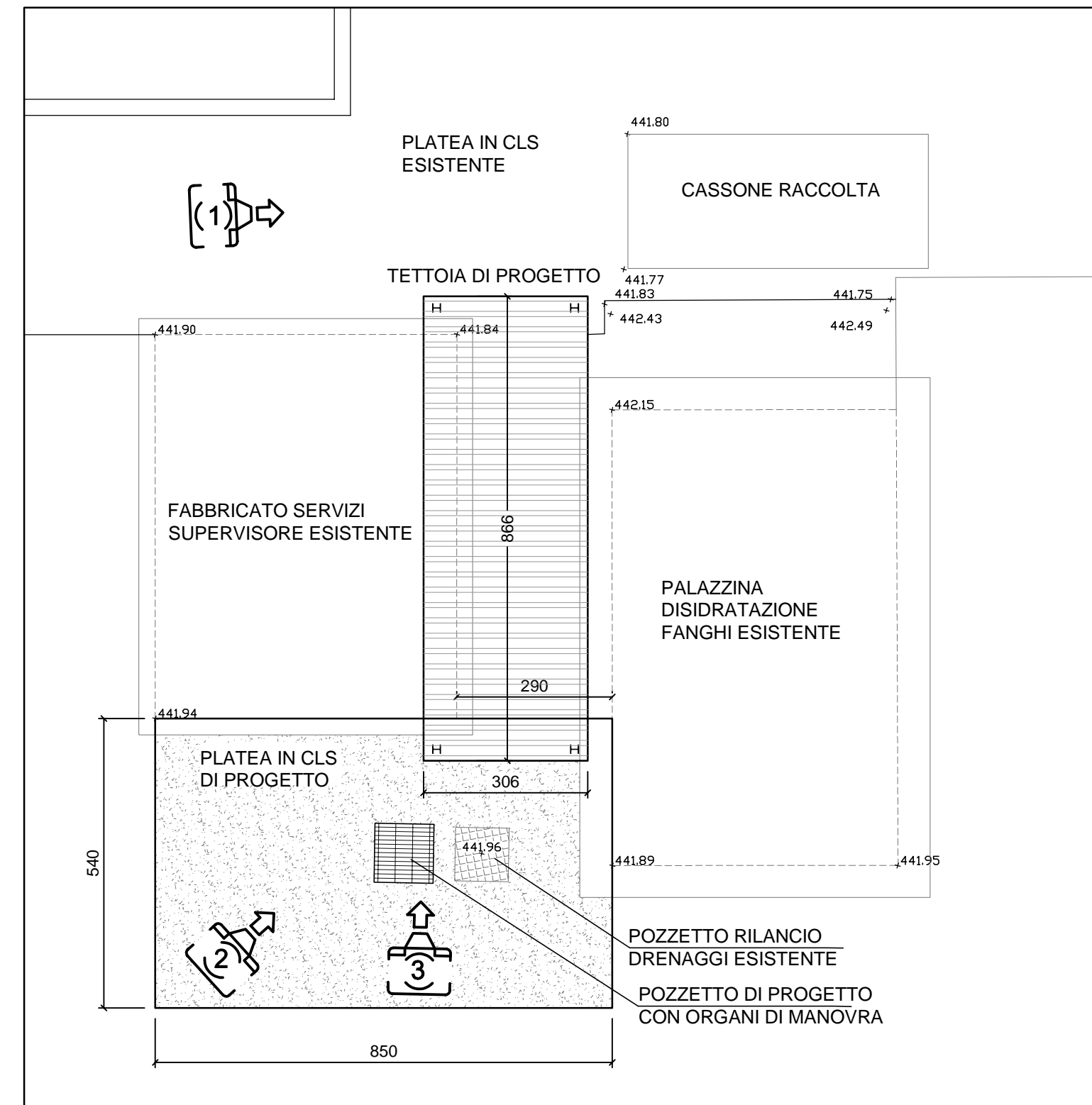


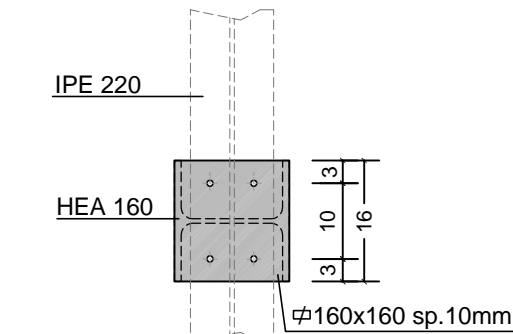
FABBRICATO SERVIZI SUPERVISORE ESISTENTE



$\left[ \begin{smallmatrix} 1 \\ 1 \end{smallmatrix} \right] \Rightarrow$

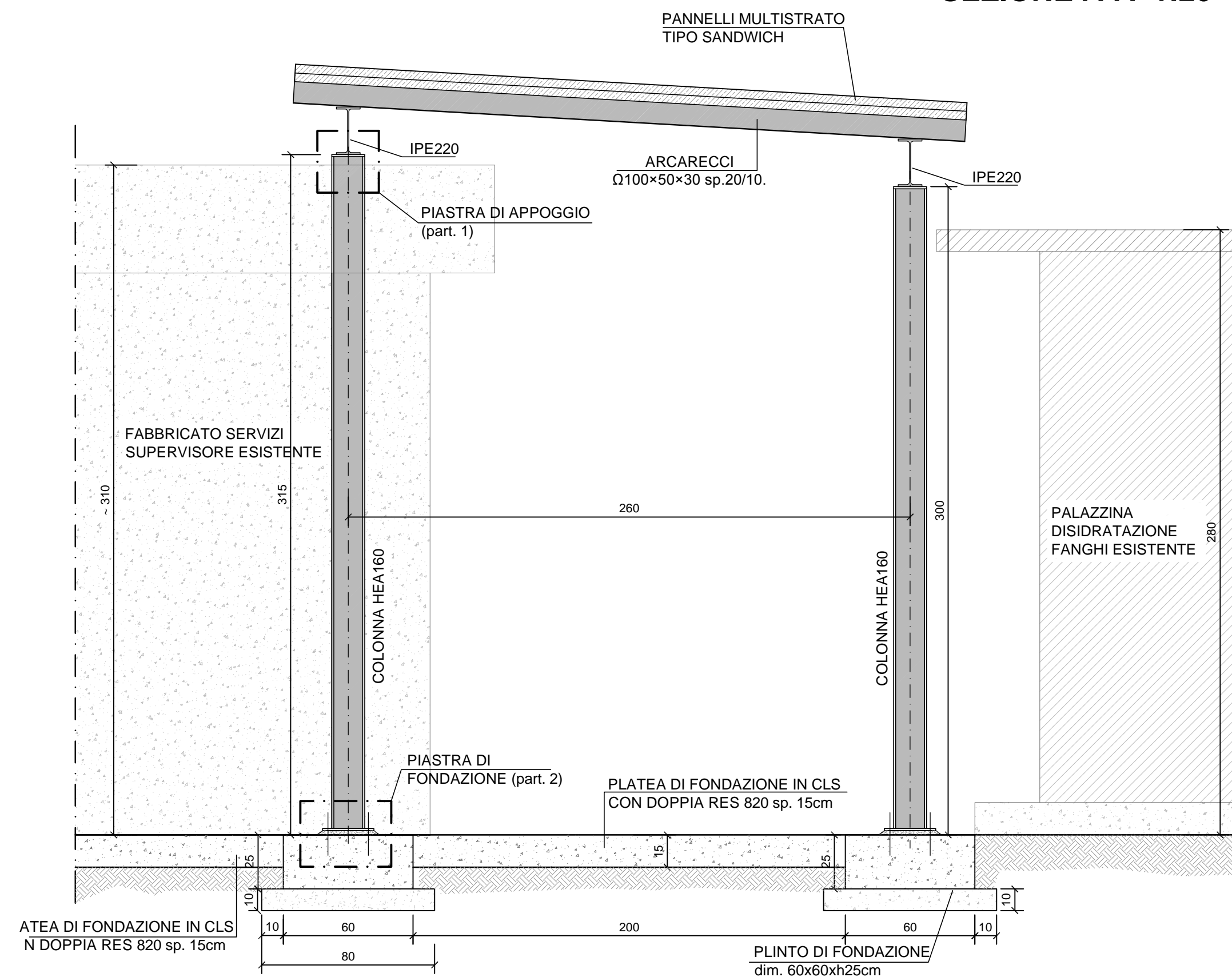


## PIANTA

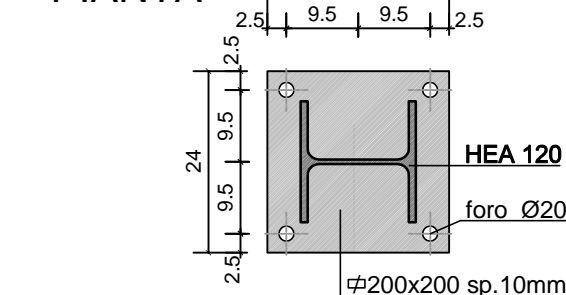


Technical drawing of the connection between the IPE 220 beam and the HEA 160 column. The drawing shows the IPE 220 beam (top) connected to the HEA 160 column (bottom) using a plate and four bolts. The bolts are labeled "foro Ø16" and "Ø160x160 sp.10mm". The height of the column section is indicated as 22.

PANNELLI MULTISTRATO  
TIPO SANDWICH



## PIANTA



**SEZIONE**

HEA 120

foro Ø200

plinto di fondazione

Ø200x200 sp.10mm



UMBRA ACQUE S.p.a.  
Via G. Benucci, 167 - 06087 Ponte San Giovanni (PG)

PROGETTO DEFINITIVO

PROGETTISTA



STUDIO ASSOCIATO ATRE INGEGNERIA  
Via Lucca, 12 - San Giustino V.no (AR)  
Tel. 055476528 - Fax 0553986924  
info@atreingegneria.net P.IVA 01932810514

DOTT. ING. LEONARDO DURANTI

INTEGRAZIONE PRESTAZIONI SPECIALISTICHE

DOTT. ING. LUISA BRACCESI



TITOLO ELABORATO

TETTOIA PROTEZIONE  
REAGENTI DISIDRATAZIONE  
MECCANICA FANGHI

CODICE PROGETTO
-----------------

DATA MARZO 2015	REVISIONE N. -----
--------------------	-----------------------

SCALA	1:10/20/100
-------	-------------

N. ELABORATO